

State Level Bankers' Committee, Puducherry
Convenor: Indian Bank

Banking Development in U.T. of Puducherry
(As at Quarter ending December 2010)

(Rs. in Crores)

S. No	Details/Sector	March 2007	March 2008	March 2009	March 2010	Dec 2010
1	Total No of Branches	120	126	145	162	173
	Of which – Rural	44	47	55	64	69
	- Semi-urban	21	22	28	33	34
	- Urban	55	57	62	65	70
2	Total Deposits	4082.95	4826.00	5626.17	6439.32	6959.28
	Of which NRI Deposits	382.32 (9.36%)	434.91 (9.01%)	495.22 (8.80%)	557.57 (8.66%)	630.89 (9.07%)
3	Total Advances	2290.88	2795.02	3237.59	4027.64	4514.40
4	CD Ratio	56%	58%	58%	63%	65%
5	Investments	122.17	115.76	144.78	159.39	145.91
6	Cr. + Inv./Deposit Ratio	59%	60%	60%	65%	67%
7	Total Priority Sector Advances	1230.06	1593.40	1932.72	2417.35	2749.61
8	% of PSA to Total Advances	54%	57%	60%	60 %	61%
9	Total Advances to Agriculture	311.40	451.47	510.15	656.36	771.70
10	% of Agri. To Total Advances	14%	16%	18%	20.27%	19.16%
11	Advances to Weaker Section	211.43	264.21	337.92	454.94	545.94
12	% of W.S. to Total Advances	9.2%	9.45%	10.44%	11.30%	12.09%
13	Advances to SC/ST	62.01	72.46	94.26	138.92	165.18
14	Advances to DRI	0.41	0.52	0.88	2.00	2.42
15	Advances to Minorities	-	67.48	90.88	189.34	243.59

**II Disbursement made under Annual Credit Plan
in UT of Puducherry**

(At a glance)

(Rs. In Crores)

Year	Particulars	Agriculture	Non farm Sector	Services	Total
2006-07	Target	100.44	87.42	144.11	331.97
	Achievement	179.16	67.42	280.13	526.71
	Achievement	178%	77%	194%	159%
2007-08	Target	140.50	93.42	167.27	401.19
	Achievement	230.44	100.30	199.17	529.91
	Achievement	164%	107%	119%	132%
2008-09	Target	299.57	138.63	256.22	694.43
	Achievement	287.14	146.63	268.10	701.87
	Achievement	96%	106%	105%	101%
2009-10	Target	300.33	166.94	297.93	765.19
	Achievement	347.77	170.17	320.79	838.73
	Achievement	116%	102%	108%	110%
2010-11 (As of Dec 2010)	Target	219.77	123.47	225.94	569.18
	Achievement	260.93	139.00	236.17	636.10
	Achievement	119%	113%	105%	112%

AGENDA: 1

Confirmation of minutes of the SLBC Meeting held on 28.12.2010

The minutes of the SLBC meeting held on 28.12.2010 was communicated to all the members vide Lead Bank letter reference ZOPDY:SLBC:L04:2010-11:1001:01 dated 10.01.2011. A copy of the minutes is enclosed as Annexure.

The minutes of the meeting may please be confirmed.

AGENDA: 2.

Review of follow up action taken on the decisions on the earlier meeting

2.1. Coverage of unbanked and under banked areas and Road Map for providing banking facility to every village by 2011.

During the SLBC held on 28.12.2010, the status report of villages in Union Territory of Puducherry was placed for information of the forum and deliberated by the members so as to provide banking services to the 43 unbanked villages with more than 2000 population. In the core committee meetings held on 12.01.2011 and 08.02.2011 member banks were requested to take effective steps as per the plan of action already given so as to complete the process before the end of March 2011.

Out of the 43 villages identified as unbanked, 33 villages have since been covered with banking services .The banks have also identified BC for the remaining 10 villages. The latest position is placed for information of the forum.

2.2. Allotment of Land for Indian Bank Self Employment Training Institute (INDSETI).

The subject matter was discussed during the SLBC held on 28.12.2010. Subsequently, Lead Bank has taken up the matter with Government of Puducherry vide our letter dated 30.11.2010 for allotting the Land free of cost as per the guidelines of Government of India, Ministry of Rural Development, New Delhi.

Department of Revenue and Disaster Management have informed vide their letter dated 07.02.2011 that the Council of Ministers has deferred the proposal. Department is requested to appraise the present status to the forum.

2.3. Proposed Waiver of Loans given in UT of Puducherry to Fishermen after Tsunami under Rajiv Gandhi Tsunami Rehabilitation package

The matter was discussed during the SLBC held on 28.12.2010 and core committee meeting on 12.01.2011 wherein the department had informed that note has been placed to the Government for waiver of loans issued under Rajiv Gandhi Tsunami Rehabilitation Package Lead Bank has again taken up the matter with Department of Fisheries and Fishermen Welfare vide letter dated 09.02.2011. Department of Fisheries and Fishermen Welfare are to inform the present status of the scheme.

2.4. Functioning of Revenue Recovery Cell and make suitable amendments to Revenue Recovery Act.

During the SLBC held on 28.12.2010, the members had deliberated regarding the utility and effectiveness of Revenue Recovery Cell and the administration has been requested to make suitable amendments in the Puducherry Revenue Recovery Act 1970 to give adequate powers to improve the recovery of outstanding overdues under PMRY. Despite the concerted efforts, it is observed that at present the cell is not functioning due to non availability of staff and also the amendments in the Revenue Recovery Act 1970 is yet to be made. It is informed that the Deputy Tahsildar of Revenue Recovery Cell recently posted has also been transferred. The matter was also discussed during the Core Committee Meetings held on 12.01.2011 & 08.02.2011 and many Bankers expressed that without adequate powers and manpower the functioning of Revenue Recovery Cell will be of limited use. The matter is placed for deliberation of the forum.

AGENDA: 3 – New Issues

3.1. Suggestions made on the proper implementation of the Financial Inclusion Plan (FIP).

The Secretary, Ministry of Finance, Government of India vide letter No.D.O.No.20/60/2010-FI dated 07.01.2011 communicated the progress made in the implementation of the Financial Inclusion Plan(FIPs) by Public Sector Banks which was reviewed during December 2010 on the parameters identified based on earlier discussions. Some of the matters that require special attention for the proper implementation of the FIPs were highlighted.

One of the action points was a plan to be prepared for allocation of all villages with a population of 1000plus be made in a honeycomb fashion around the FIP village allocated to Banks (and BCs) through the SLBC mechanism. As per the above suggestion a meeting of allotted banks of the 18 villages with a population of more than 1000 was convened on 28.01.2011 and the matter was discussed in detail.

It was decided to include the 7 villages with less than 1000 population and complete the second phase of FIP for these 25 villages by September 2011. The concerned banks are requested to do the needful for providing banking services as being done for the villages with above 2000 population and send us their plan of action at the earliest. The list of villages and allotted banks is enclosed for information and deliberation of the forum.

3.2.) Monitoring of implementation of Financial Inclusion Plans and the Electronic Benefit Transfers through Banking Channels-Designation of Nodal Officer

Government of Puducherry, Planning and Research Department vide letter No.509/5/PRD/DD(B&T)/2010/S1/8058 dated 31.12.2010 informed that as per the suggestion of the Department of Financial Services, Ministry of Finance, Principal Secretary (Plan/Finance), Government of Puducherry has been designated as the Nodal Officer in respect of the Union Territory of Puducherry to monitor the implementation of Financial Inclusion Plans(FIPs)

Letters received from the concerned Department is placed for the information and deliberation of the forum.

3.3.) Executive Summary of the Study Report on Verification of Borrowers and End Use of Funds under Government Sponsored Schemes.

Reserve Bank of India, Chennai vide their letter No.RPCD/(Che)/2276/02.08.12/2010-11 dated 25.01.2011 has informed that the Local Board(Western area) of RBI had suggested that the services of external agencies may be engaged for undertaking verification of the status of the borrowers and end use of funds to evaluate the efficiency of the Government Sponsored Schemes. The National Institute of Rural Development (NIRD), Hyderabad was accordingly engaged to conduct the study and NIRD have since submitted their report.

A copy of the Executive Summary of the said Study Report containing finding, major observations and suggestions made by NIRD is placed for the information and deliberation of the forum.

3.4.) MUPSES - Subsidy Claim Procedure - Modification

Government of Puducherry to avoid delay in implementation of the Motivation of Unemployed Persons to Start Self-employed Enterprises Scheme (MUPSES) has made certain modifications in the scheme especially with regard to subsidy claim procedure. The G.O. regarding the same is placed for information and deliberation of the forum.

3.5.) Interest Subsidy Scheme for Housing the Urban Poor (ISHUP) Scheme.

National Housing Bank vide their letter dated 18.01.2011 has informed of the decision taken in the steering committee meeting held on 15.10.2010. The Main points are

1. Facilitation fee for business correspondent/business facilitator per approved application
2. Redesigned format of ISHUP application
3. Size of house for EWS & LIG beneficiaries
4. List of State Level Nodal Agencies.

They have also vide their letter dated 31.01.2011 informed the various initiatives taken by Government of Tamil Nadu to provide more impetus in implementation of the scheme the same is placed for information of the forum.

The representative from National Housing Bank and nodal agency of UT of Puducherry viz. Town and Country Planning Department, Government of Puducherry are requested to apprise the latest developments.

AGENDA: 4

Review of performance of Commercial Banks in U.T. of Puducherry:

Position as at the end of December 2010

Branch Net Work:

As at the end of December 2010, there are 39 banking institutions with a total network of 173 branches operating in the Union Territory of Puducherry. The commercial banks with 123 branches, Puducherry State Co-operative Bank with 26 branches, and Puducherry Co-operative Central Land Development Bank with one Branch and a Regional Rural Bank of U.T. of Puducherry named Pudukkottai Bharathiar Grama Bank with 23 branches are taking care of the banking services of the people in the UT of Puducherry.

The Agency wise break up is as under:

No	Particulars	No. of branches	Of which Rural branches	Branches in Karaikal Region
01	Commercial Banks	123	37	25
	Of which			
	a. Nationalized Banks	99	36	19
	b. Private Sector Banks	24	1	6
02	Puducherry State Co-op. Bank	26	15	2
03	P.C.C.L.D. Bank	1	-	-
04	Regional Rural Bank	23	17	5
	TOTAL	173	69	32

Besides this, PIPDIC (A Government of Puducherry Undertaking) & SIDBI are also extending loan assistance in this Union territory. **Of the 173 branches, as many as 104 branches constituting 60% are in urban/semi-urban areas. The average population served per branch is placed at 5632. In Karaikal Region 32 branches are operating and the average population served per branch is around 5337.**

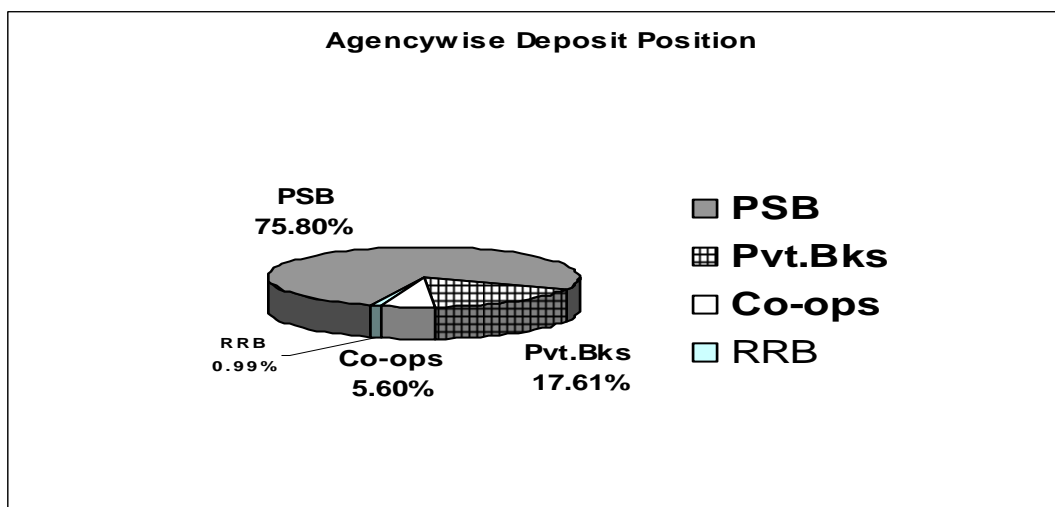
The comparative details of the agency-wise performance under various important parameters are furnished in the annexure.

Business Position as on 31.12.2010

(Rs. in Crores)

Sl. No	Details/Sector	March 2010	Dec 2010	Variation & % of growth over March 2010
1	Total Deposits	6439.32	6959.28	519.96 (8.07%)
	Of which NRI Deposits	557.57	630.89	73.32
2	Total Advances	4027.64	4514.40	486.76 (12.09%)
3	CD Ratio	63%	65%	2
4	Investments	159.39	145.91	-13.48
5	Credit + Inv / Deposit Ratio	65%	67%	2
6	Total Priority Sector Advances	2417.35	2749.61	332.26 (13.74%)
7	% of Priority Sector Adv. to Total Advances	60%	61%	1%
8	Total Advances to Agriculture	656.36	771.70	115.34 (17.57%)
9	% of Agri. advances to Total Advances	20.27%	19.16%	-1.11
10	Advances to Weaker Section	454.94	545.94	91
11	% of Weaker Section to Total Advances	11.30%	12.09%	0.79%
12	Advances to SC/ST	138.92	165.18	26.26 (18.90 %)
13	Advances to Minorities	189.34	243.59	54.25 (28.65%)
13	Advances to DRI	2.00	2.42	0.42

Agency-wise Deposit Position:



Deposits

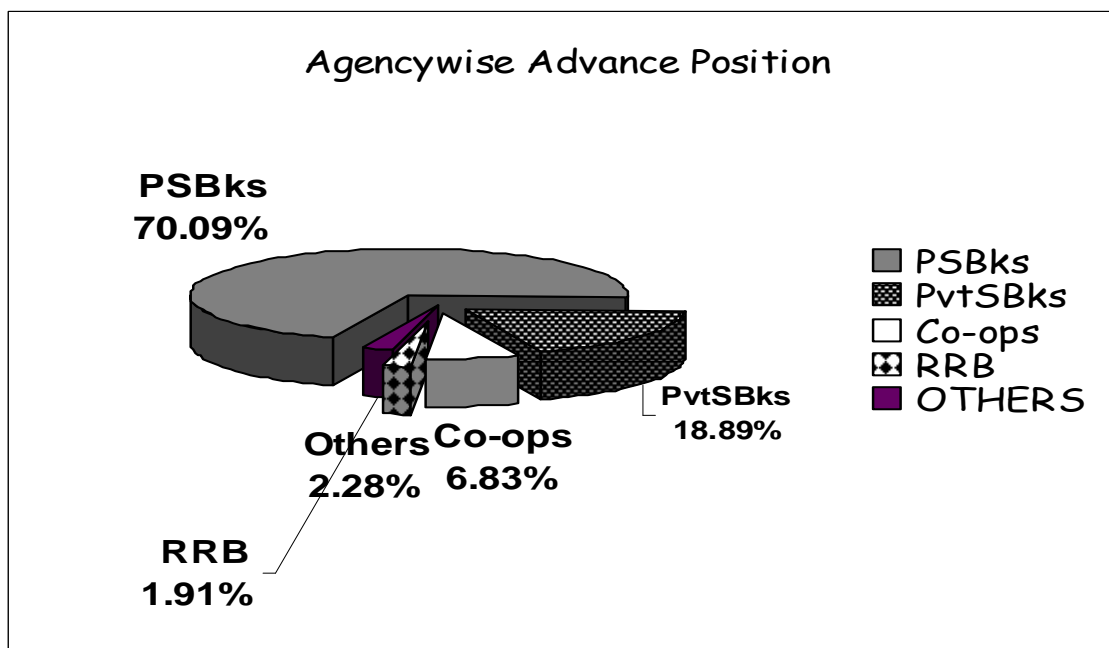
(Rs. in Crores)

Agency	March 2010	Dec 2010	Variation & % of growth over March 2010
Public Sector Banks	4960.00	5274.87	314.87 (6.35%)
Private Sector Banks	1074.95	1225.96	151.01 (14.05%)
Co-operative Banks	363.56	389.79	26.23 (7.21%)
Regional Rural Bank	40.81	68.66	27.85 (68.24%)
TOTAL	6439.32	6959.28	519.96 (8.07%)

Analysis:

- The deposits mobilized by the banking system in the UT of Puducherry rose from Rs. 6439.32 Crores as of March 2010 to Rs. 6959.28 Crores as of December 2010 registering an increase of Rs.519.96 Crores (8.07%).
- The Public Sector Banks continued to have a predominant share with their deposits constituting as high as 75.80% of the total deposits followed by Private Sector Banks at 17.61%, Co-operative Banks at 5.60% and RRB at 0.99%
- In absolute terms, Public Sector Banks have shown an increase in the growth of Deposits by Rs.314.87 crores (6.35%). The deposits of Private Sector Banks increased by Rs.151.01 crores (14.05%). The deposits of Co-operative Banks increased by Rs.26.23 crores (7.21%). RRB has mobilized deposit of Rs.68.66 crores.

Agency-wise Advance Position



Advances

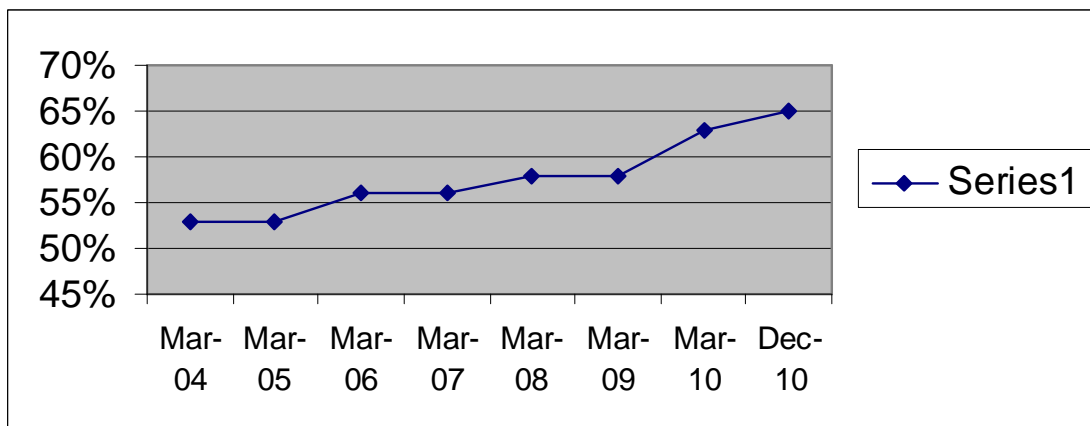
(Rs. in crores)

Agency	March 2010	Dec 2010	Variation & % of growth over March 2010
Public Sector Banks	2851.21	3164.11	312.90 (10.97%)
Private Sector Banks	792.35	852.56	60.21 (7.60%)
Co-operative Banks	249.02	308.26	59.24 (23.79%)
Regional Rural Bank	44.51	86.42	41.91 (94.16%)
Others	90.55	103.05	12.50 (13.80%)
TOTAL	4027.64	4514.40	486.76 (12.09)

Analysis:

- Gross credit increased by Rs.486.76 crores showing a growth rate of 12.09%.
- Public Sector Banks have shown increase of Rs. 312.90 Crores, recording a growth rate of 10.97% over the March 2010 position.
- Private Sector Banks have shown increase of Rs.60.21 Crores.
- Co-operatives banks have shown an increase of Rs.59.24 Crores (23.79%) when compared to March 2010 position.
- RRB has lent advance to the tune of Rs.86.42 crores.

CD Ratio:



Compared to the growth rate of 8.07% shown by deposits, the advances have registered a growth of 12.09% during the period under review. Hence the CD ratio has reached 65% as of December 2010 (from 63% as of March 2010).

- NRI deposits amounting to Rs.630.89 Crores accounts for 9.07% of the total deposits invested in bank branches in UT. Excluding the NRI deposits, the CD ratio works out to 71.34%.
- The CD ratio for Karaikal Region works out to 75 %
- Out of the 23 Public sector banks present in the UT, 8 Banks are having CD Ratio of more than 60% and the remaining 15 Public Sector Banks have a CD Ratio of less than 60%.
- Of the 13 Private Sector Banks in the UT, 9 Banks are having CD Ratio of 60% and above while the remaining 4 have a CD Ratio of less than 60%.
- RRB, PSCB and PCCLDB have a CD Ratio of above 60%.

Credit to Deposit and Investment Ratio

It is reported that RRB, PSCB & PCCLDB have made an investment to the tune of Rs.145.91 Crores in Government Securities and as a result the Credit plus Investment to Deposit ratio is at 67% in December 2010.

Performance under other key functional areas:

Area	Reserve Bank of India Norms	Actuals as on March 2010	Actuals as on December 2010
Priority Sector	40%	60%	61%
Agricultural Advances	18%	20.27%	19.16%
Weaker Section Advances	10%	11.30%	12.09%
DRI Advances	1%	0.05%	0.05%

Analysis:**Priority Sector:**

The share of Priority Sector Credit to Total Advances stood at 61% for the period under review. In absolute terms, there is an increase of Rs.332.26 Crores over March 2010. The rate of growth during the period stood at 13.74 %, which is against the growth rate of over all credit at 12.09% for this period. As per the norms of RBI, banks are required to maintain 40% under Priority Sector advances.

Agriculture:

Under Agriculture loans, there is an increase of Rs.115.34 crores during the period under review. The ratio of agriculture advances to the total advances is at 19.16% as of December 2010 as per the revised guidelines of calculation of ratio based on the previous year's outstanding advances.

Weaker Section:

Advances to Weaker Sections under Priority Sector Advances have increased by Rs.91 Crores during the period under review. This accounts for a growth of 0.79 % over March 2010 position. The ratio of weaker section advances to total advances as of December 2010 is at 12.09%

DRI Scheme:

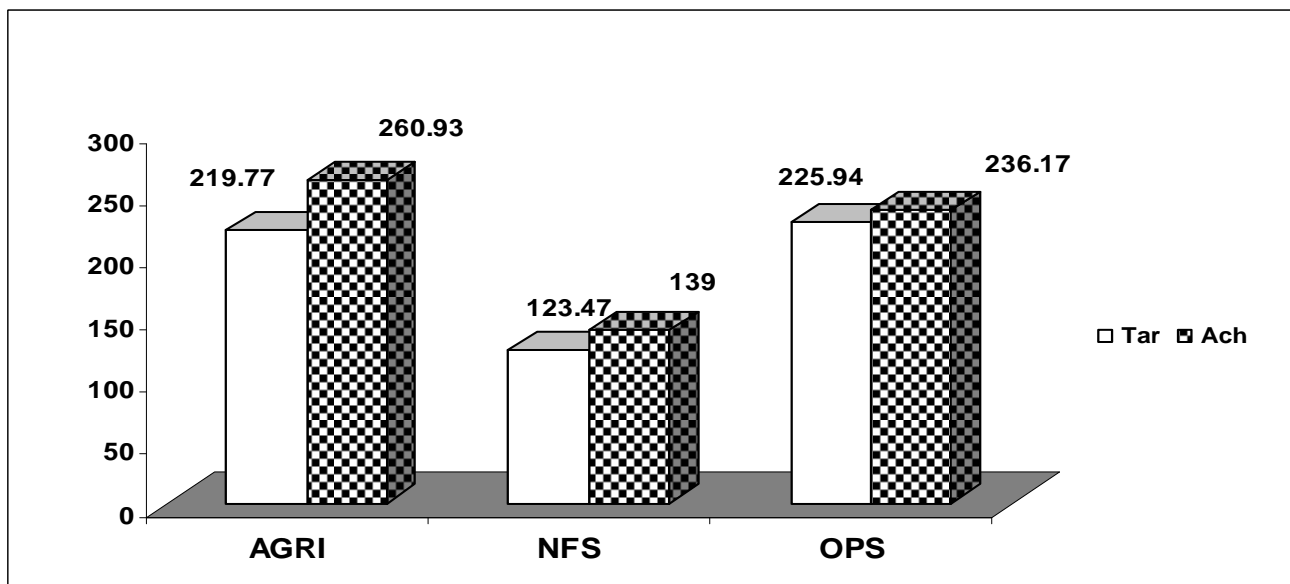
The outstanding advance under DRI has increased from Rs.2.00 crores as on March 2010 to Rs.2.42 crores as of December 2010

AGENDA: 5

Review of Performance under Annual Credit Plan 2010-11

(Position as on 31.12.2010)

(Rupees in Crores)



The Sector wise target vis-à-vis achievement (Disbursement) as of 31.12.2010 is given below:

(Rs. in Crores)

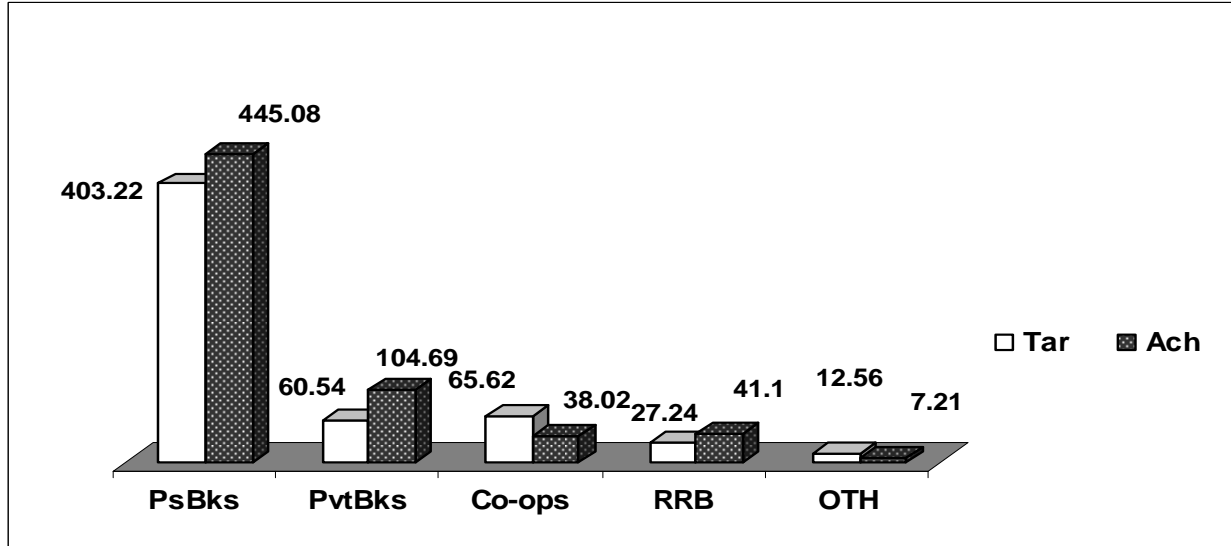
Sector	Target	Achievement	% of Achievement
	As of Dec 2010		
Agriculture	219.77	260.93	119
NFS	123.47	139.00	113
OPS	225.94	236.17	105
TOTAL	569.18	636.10	112

The aggregate Credit disbursement upto December 2010 for the year 2010-11 amounts to Rs.636.10 Crores against the target of Rs. 569.18 Crores, which works out to 112% of the target during the period under review. The Banks in UT of Puducherry continue to give thrust to Agriculture. The credit flow to agriculture sector reached a level of Rs.260.93 crores against the target of Rs. 219.77 crores achieving a level of 119% of the target. Major share of credit is absorbed for short term credit requirement. Agriculture sector absorbed 41% of the total credit and is followed by Other Priority Sector at 37% under which banks have disbursed loans amounting to Rs.236.17 crores against a target of Rs.225.94 crores achieving a level of 105 %. Tourism related activities, Hotel industry, IT and IT enabled services, food processing units are the major beneficiaries of this credit flow. While absorbing 32% of the share the Non-farm sector achievement was also more than the target at 113%

Agency-wise target vis-à-vis achievement under ACP 2010-11

(Position as on December 2010).

(Rupees in Crores)



The performance of Private Sector Banks under ACP 2010-11 is placed at 173%, Regional Rural Bank at 151 % Public sector Banks at 110% is commendable. Whereas Co-operative banks at 58% needs focused attention.

(Rs. in Crores)

Agency	Target	Achievement	% of Achievement
	As on Dec 2010		
Public Sector Banks	403.22	445.08	110
Private Sector Banks	60.54	104.69	173
Co-op Sector Banks	65.62	38.02	58
RRB	27.24	41.10	151
Others (PIPDIC/SIDBI)	12.56	7.21	57
TOTAL	569.18	636.10	112

AGENDA: 6

NATIONAL PILOT PROJECT FOR FINANCIAL INCLUSION (NPPFI) – PUDUCHERRY:

The Union Territory was declared as covered with 100 per cent banking facilities to all its eligible and willing households. The bankers are to utilize this opportunity to assist the needy population by way of overdraft and General credit card. Banks can still open no frills accounts for any left out household/population. Bankers have shown enthusiasm in opening of no-frills accounts for the old age and disabled pensioners by following the National Pilot Project on Financial Inclusion guidelines. As on December 2010, a total number of 212884 accounts have been opened under the project. All the Banks have also extended credit facilities to the tune of Rs.297.98 lakhs to 26780 beneficiaries under OD/GCC scheme and Rs.578.80 lakhs to 1883 beneficiaries under other facilities. All the banks are requested to provide credit facilities to the account holders.

AGENDA: 7

Flow of credit to Agriculture

The banks in UT of Puducherry have performed exceedingly well and achieved the doubling of credit flow to agriculture in two years time i.e. by the end of 2005-06. They are continuing the good performance in this year also.

The progress made in UT of Puducherry with respect to the new farm credit policy is given below:

(FOR THE PERIOD 01.04.2010 TO 31.12.2010)

(Rs. in crores)

S. No.	Particulars	No	Amount
	Annual Target AS PER ACP 2010-11	114467	301.21
1	Loans issued a. Crop loans	4262	27.42
	b. Agri. Jewel Loans	39365	177.70
	c. Agri Term loan	3532	55.82
	TOTAL	47157	260.93
2	No of new farmers financed	9368	51.45
3	No of Agri. clinics financed	1	0.05
4	Tenant farmers and oral lessees financed	1487	5.51
5	Debt Swap Scheme	419	0.73

During the period under review banks in UT of Puducherry provided crop loans to 4262 farmers to the tune of Rs.27.42 crores and the total credit deployment by banks in the UT of Puducherry in the agriculture sector is Rs.260.93 crores as against the annual target of Rs.301.21 crores.

Banks are requested to finance more Agri. Clinics. They are also requested to lend more to tenant farmers and oral lessees and also under Debt swap scheme.

All the crop loans given to notified crops in the notified area are to be invariably covered under NAIS.

Bank wise performance under the Flow of credit to Agriculture is furnished in the annexure.

AGENDA: 8

Review of Recovery Performance under Government Sponsored Schemes:

8.1. Recovery performance under PMRY:

The rate of recovery under PMRY during the period under review was 28%. The Bank-wise recovery details are furnished in annexure.

8.2. Review of recovery performance under SJSRY:

As of December 2010 the recovery performance under group loans (SJSRY-UWSP) is at 84% and the rate of recovery under SJSRY (USEP) individual loan is at 50%. Banks and the department are to put in more efforts to improve the recovery and not allow the rate of recovery to decline, in the upcoming year also. The Bank-wise recovery details are furnished in annexure.

8.3. Review of recovery performance under SGSY

The recovery performance under SGSY as of December 2010 stands at 87%. The Bank-wise recovery details are furnished in annexure.

8.4. Review of Recovery performance under Priority Sector Advances

The recovery under Priority Sector advances is 80% of the total demand during the period under review. The Bank-wise recovery details are furnished in annexure.

AGENDA: 9

Review of Performance under Government Sponsored Schemes in UT of Puducherry

9.1 Swarnjayanti Gram Swarozgar Yojana (SGSY):

The formation of Self-Help Groups among the BPL families is being made on an on-going basis under the SGSY Scheme. Against the target of 250 groups under economic assistance for the year 2010-11 the agency has sanctioned subsidy for the 146 cases. Banks have released loans to 96 cases amounting to Rs.218.70 Lakhs. Under Revolving fund against the target of 300 bank's share has been released for 139 cases out of 159 applications sent by DRDA (Details are provided annexure)

9.2 PMEGP

For the year 2010-11 in rural areas so far banks have sanctioned 71 applications. In urban areas 50 applications have been sanctioned. (Details are provided in annexure)

9.3 PADCO – Adi Dravidar Welfare Programme

For the year 2010-11, against the target of 1300, the banks have sanctioned 900 applications. (Details are provided in annexure)

9.4 SJSRY

For the year 2010-11, against the target of 794 under USEP, banks have sanctioned 384 applications. Under UWSP against a target of 91, 29 applications were sent and 23 applications have been sanctioned. (Details are provided in annexure)

Banks are requested to dispose-off the applications as per the time norms of Reserve Bank of India. The line departments are also requested to work in close co-operation with banks for achievement of the targets well before time.

AGENDA: 10

10.1 Performance under Housing Finance Scheme:

The increase in construction activity in Union Territory of Puducherry especially in Puducherry and Karaikal Regions has resulted in disbursement of more number of housing loans. The total disbursement upto December 2010 for the year 2010-11 is Rs.97.08 crores in 1493 accounts.

10.2 Performance under Educational Loan Scheme:

The increasing demand from student community for credit assistance to pursue higher education is playing greater role of the performance of the banks. All the member banks are actively participating in Educational loan Scheme.

The outstanding advance in Educational loan as on 31.12.2010 is Rs.208.27 Crores. This accounts for 4.61% of the total advances. Banks have sanctioned loan assistance to 2578 students for a sum of Rs.40.51 Crores upto December 2010.

10.3 Credit Flow to Non Farm Sector:

The outstanding advance to Non farm sector as of 31.12.2010 is Rs.796.94 crores. This accounts for 17.65% of the total credit. As per the report received from bank branches and as shown in the annexure, credit flow to the tune of Rs.13900.32 lakhs was made upto December 2010 to 4814 accounts.

In view of the various schemes in operation viz. Credit Guarantee Fund Trust Scheme, Credit Linked Capital Subsidy scheme, Micro Finance Scheme banks are requested to increase the lending under SME sector.

AGENDA: 11

11.1 Disbursement to Minority Community

The outstanding advance to minority communities as on December 2010 is Rs.243.59 Crores. This accounts for 8.86% of Priority sector advances. Banks have disbursed an amount of Rs.50.78 Crores to 7530 accounts to Minority Communities upto December 2010 for the year 2010-11. Banks are requested to take note of the Prime Ministers 15 Point programme on the welfare of minorities and to lend more to the minority community.

11.2 Disbursement to SC/ST Community

The outstanding advance to SC/ST communities as on 31.12.2010 is Rs.165.18 Crores. This accounts 3.70% of the total advances. With regard to disbursement to SC/ST communities banks have disbursed an amount of Rs.53.51 Crores to 6767 accounts upto December 2010.

11.3 Disbursement to Women beneficiaries

The outstanding advance to women beneficiaries as on 31.12.2010 is Rs.395.30 Crores. This accounts for 8.76% of the total advances. With regard to disbursement to women beneficiaries banks have disbursed an amount of Rs.63.34 Crores to 11480 accounts for the period under review.

AGENDA: 12

12.1 Performance under Kisan Credit Card Scheme:

For the quarter ending December 2010 banks have issued 7212 cards and extended credit assistance of Rs.3615.60 lakhs.

Banks are requested to route all the crop loans through KCC and also to furnish the statements correctly to lead bank. All the KCC holders should be invariably covered under PAIS with a view to provide continued accident insurance coverage.

12.2 SHG Credit Linkage:

During the quarter, 966 new SHGs opened SB Accounts. Upto December 2010, 2144 groups were credit linked to the tune of Rs.4069.42 Lakhs and 1056 groups' availed repeat finance amounting to Rs.2578.04 Lakhs. The cumulative number of SHGs having SB accounts as on 31.12.2010 is 19524.

AGENDA: 13

Submission of LBR-2 and LBR-3 Returns

The level of submission of LBR 2 and LBR U2 by bank branches in UT of Puducherry as of December 2010 is furnished as below:

Name of the Return	Submission Level	Name of the Return	Submission level
LBR 2	100%	LBR U2	100%
LBR 3-A	100%	LBR U3-A	100%

Due to the concerted efforts by Lead Bank by sending the formats well in advance, reminders, telephonic reminders, information through various meetings, we are able to achieve 100% submission of Lead Bank Returns.

The District Co-ordinators are requested to take note of the new guidelines issued by Reserve Bank of India in order to improve the effectiveness and streamlining the functioning of SLBC Meetings and ensure to continue the 100% submission of LBR in time so that the actual performance is presented for review.

Bank wise details on LBR submission is given in the annexure.

Agenda No 14.

Stimulus Package Issues relating to MSME sector.

In compliance with the directives of Reserve Bank of India contained in their letter No RPCD.SME &NFS. BC.NO.76/6.2.31(P)/2008-09 dt. 16.12.08 wherein it was mentioned that Special SLBC is to be convened every month to discuss the issues relating to MSME sector and the same is also to be discussed as a part of agenda in the regular SLBC meetings. Accordingly, the latest meeting was held on 08.02.2011.

Agenda : 15

i. Success Stories in UT of Puducherry

a. Success story of a Women Entrepreneur

Mrs. Reeta W/O Amalraj is a member of Anbiyangal Women SHG formed by the NGO M/S CEAD (Centre for Environment and Agriculture Development), Thavalakuppam with 20 women residents of RK Nagar, Ariyankuppam on 10.07.2005. Each member started saving Rs.100 per month. The group availed first loan of Rs.160000/- in March 2007 from Indian Bank branch at Ariyankuppam. After closure of the first loan, the second loan of Rs.3.85 lakhs was availed by the group from Pudukkottai Bharathiar Grama Bank Thavalakuppam branch. As her husband was working in a bakery, Mrs. Reeta was able to convince her group members for sanction of Rs.1.00 lakhs from the above Bank loan for starting a Bakery with the help of her husband. Now the bakery is running successfully and she is able to save more than Rs.1000/- after meeting all the household expenses and loan repayment. This is a success story of a women entrepreneur who has benefitted through SHG Movement.

b. Success Story of a PMRY Entrepreneur

Mr. Jayapal, a graduate from T.R.Patnam Village of Karaikal region in UT of Puducherry approached Indian Bank Karaikal branch for the financial assistance to set up a milk selling outlet during 1995 under PMRY Scheme with the project outlay of Rs.95000/- involving subsidy component of Rs.7500/-. Which was immediately sanctioned and the repayment was also prompt as per the sanctioned terms.

In the year 1999, the bank sanctioned Overdraft facility of Rs. 3.00 lacs in the name of M/s Karaikal Ammaiyaar Milk Dairy, which was enhanced to Rs.10.00 lacs. In the year 2004, under tie-up arrangement milch animal loans were sanctioned to the farmers and term loan to the unit for setting up milk processing unit. In the year additional term loan of Rs.65.00 lakhs for import of homogeneous machine from Sweden was also sanctioned.

In the year 2010, a milk processing unit was set-up at Namakkal. The average per day milk procurement is ranging about 55000 litres. Now, the above enterprising entrepreneur is providing employment to nearly 1000 persons including two qualified Dairy Technology professional besides indirect employment at market outlet / sales point to a significant numbers. Shortly he is planning to set up a large scale dairy bi-product chilling unit with imported equipments. This is the success story of a PMRY entrepreneur who through his sincerity and hard work is able to provide employment to many persons.

Agenda : 15

ii) PRESENTATION OF PAPER BY THE ACADEMICIAN

Dr.R Vijayalakshmi, Subject Matter Specialist (H.Sc.), Krishi Vigyan Kendra, Puducherry would be presenting a paper regarding Women Enterprise Management. The gist of the paper is enclosed for information of the members.

Agenda : 16

Any other matter with the permission of the Chair.